

R-17-E

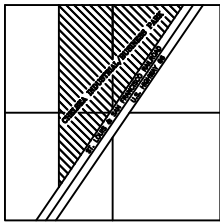
CHELSEA INDUSTRIAL/BUSINESS PARK

THE E/2 OF THE NW/4 AND THE E/2 OF THE SW/4 AND THE NE/4 ALL LYING NORTH AND WEST OF THE RAILROAD IN SECTION 36, TOWNSHIP 24 NORTH, RANGE 17 EAST OF THE I.B.&M., ROGERS COUNTY, STATE OF OKLAHOMA.

200 0 200 400 600 Feet

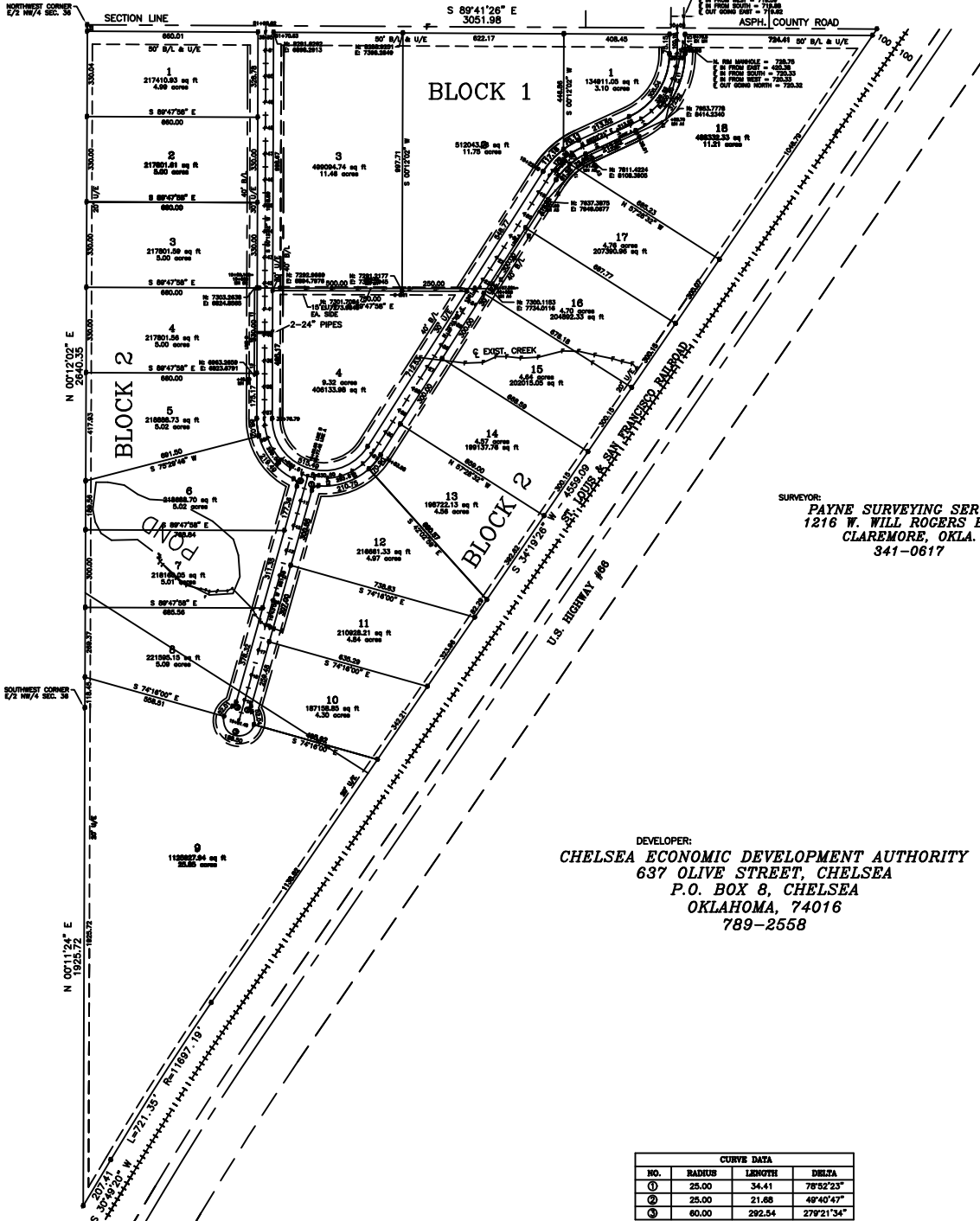
SCALE 1" = 200'

T
24
N



LOCATION MAP
SECTION 36
TOTAL LOTS = 22
TOTAL ACRES = 168.02

SECTION LINE



SURVEYOR:
PAYNE SURVEYING SERVICE
1216 W. WILL ROGERS BLVD.
CLAREMORE, OKLA.
341-0617

DEVELOPER:
CHELSEA ECONOMIC DEVELOPMENT AUTHORITY
637 OLIVE STREET, CHELSEA
P.O. BOX 8, CHELSEA
OKLAHOMA, 74016
789-2558

CURVE DATA			
NO.	RADIUS	LENGTH	DELTA
①	25.00	34.41	78°52'23"
②	25.00	21.68	49°40'47"
③	60.00	292.54	279°21'34"

LEGEND
O = SET 1/2" IRON PIN
B/L = BUILDING LINE
U/E = UTILITY EASEMENT